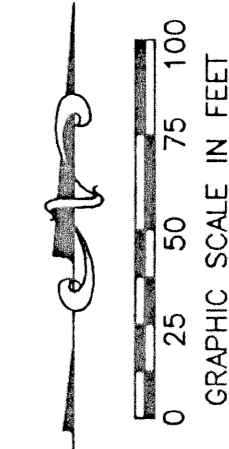


# WINSTON TRAILS PARCEL NINETEEN

PART OF WINSTON TRAILS P.U.D.  
BEING A PORTION OF LOT 1,  
HIATUS TRACT 38, TOWNSHIP 44 1/2 SOUTH, RANGE 42 EAST  
PALM BEACH COUNTY, FLORIDA  
DECEMBER, 1998 SHEET 3 OF 3

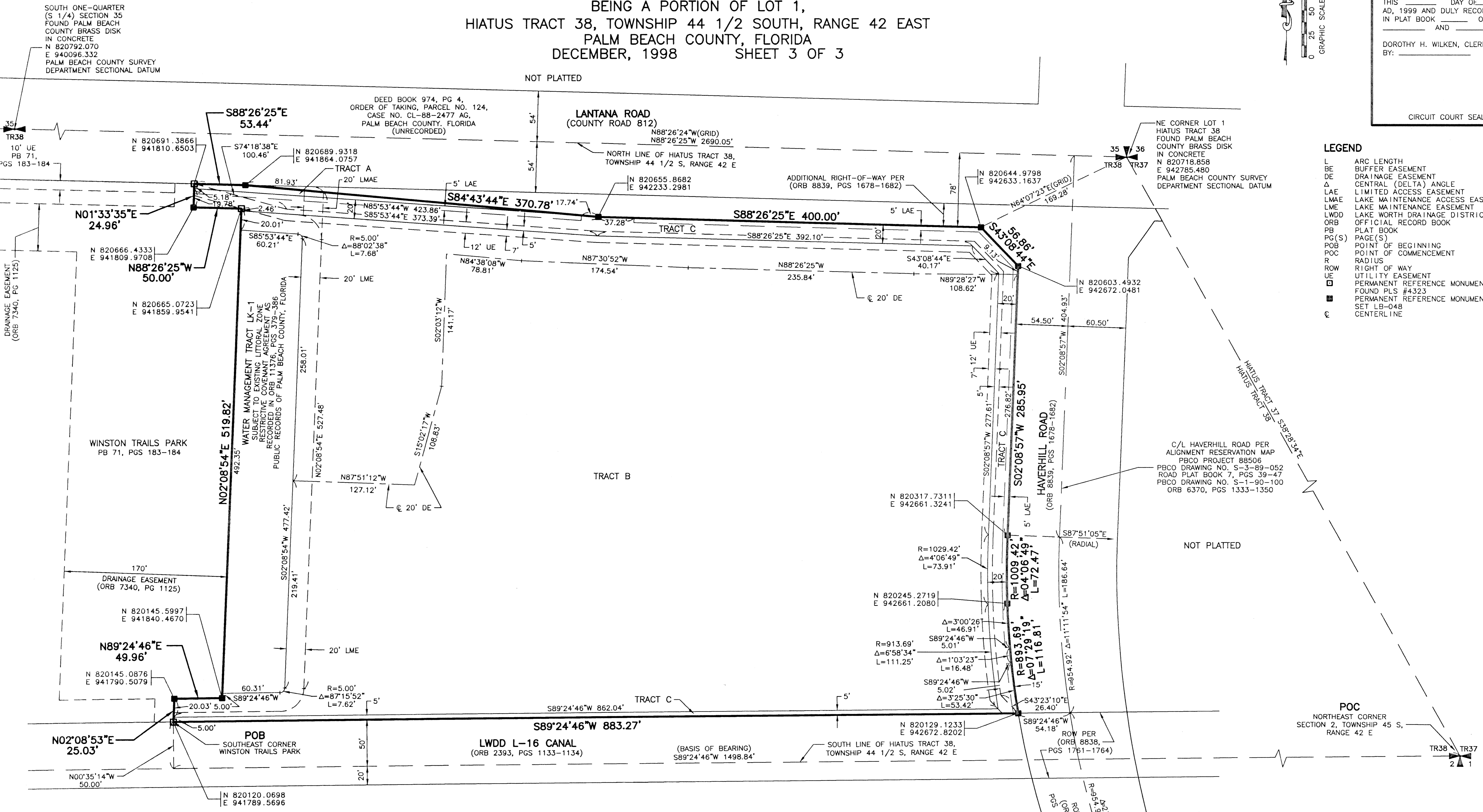
97

STATE OF FLORIDA  
COUNTY OF PALM BEACH  
THIS PLAT WAS FILED FOR  
RECORD \_\_\_\_\_ DAY OF \_\_\_\_\_  
AD, 1999 AND DULY RECORDED  
IN PLAT BOOK \_\_\_\_\_ ON PAGES  
\_\_\_\_\_ AND \_\_\_\_\_  
DOROTHY H. WILKEN, CLERK  
BY: \_\_\_\_\_, D.C.

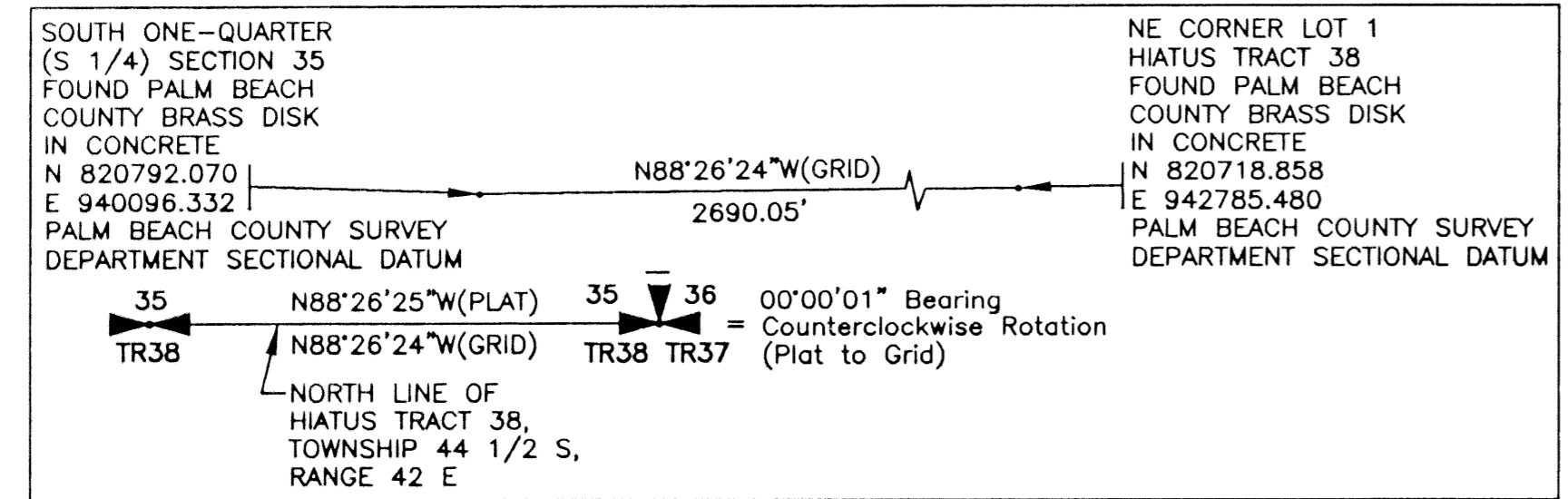


### LEGEND

- L ARC LENGTH
- BE BUFFER EASEMENT
- DE DRAINAGE EASEMENT
- Δ CENTRAL (DELTA) ANGLE
- LAE LIMITED ACCESS EASEMENT
- LMAE LAKE MAINTENANCE ACCESS EASEMENT
- LME LAKE MAINTENANCE EASEMENT
- LWDD LAKE WORTH DRAINAGE DISTRICT
- ORB OFFICIAL RECORD BOOK
- PB PLAT BOOK
- PG(S) PAGE(S)
- POB POINT OF BEGINNING
- POC POINT OF COMMENCEMENT
- R RADIUS
- ROW RIGHT OF WAY
- UE UTILITY EASEMENT
- PERMANENT REFERENCE MONUMENT FOUND PLS #4323
- PERMANENT REFERENCE MONUMENT SET LB-048
- ⊙ CENTERLINE



SUBDIVISION Winston Trails  
 BOOK 87  
 FLOOD ZONE 170A  
 PLAT # 48  
 ZONING PUD  
 SE 27-112  
 ZIP CODE 33467  
 TAZ 436  
 PUD NAME Winston Trails



- NOTES:
- THE COORDINATES SHOWN HEREON ARE STATE PLANE GRID COORDINATES ACCORDING TO THE TRANSVERSE MERCATOR PROJECTION OF THE FLORIDA EAST ZONE, N.A.D. 83, PER THE 1990 ADJUSTMENT.
  - THE LINEAR DIMENSIONS SHOWN HEREON ARE GROUND DISTANCES IN U.S. FEET AND DECIMAL PARTS THEREOF.
  - THE GROUND DISTANCE TO GRID DISTANCE SCALE FACTOR IS 1.0000346 (GROUND DISTANCE X SCALE FACTOR = GRID DISTANCE).

THIS INSTRUMENT WAS PREPARED BY MARY HANNA CLODFELTER, P.S.M. IN THE OFFICES OF MOCK, ROOS & ASSOCIATES, INC., 5720 CORPORATE WAY, WEST PALM BEACH, FLORIDA 33407.

SCALE:  
1" = 50'  
P.A. NO.:  
98053.00  
DATE:  
DECEMBER 1998  
DRAWING NO.  
44H-42-38-07

**MOCK • ROOS**  
ENGINEERS • SURVEYORS • PLANNERS  
5720 Corporate Way, West Palm Beach, Florida 33407  
(561) 683-3113, fax 478-7248

**WINSTON TRAILS  
PARCEL NINETEEN**  
PART OF WINSTON TRAILS P.U.D.  
BEING A PORTION OF LOT 1,  
HIATUS TRACT 38,  
TOWNSHIP 44 1/2 SOUTH, RANGE 42 EAST  
PALM BEACH COUNTY, FLORIDA

11/15/98 12:27:22 PM PK EST  
 S:\cont\wintr19.dwg, wt19rpd2.dwg  
 REV.: 11-15-99  
 CAD FILE:  
 CONTWT19\WT19RPD2